



ProvideX

Plug-in for Eclipse

Installation Guide

Operating Systems	1
Pre-requisites	1
Java	2
Download	2
Eclipse	3
Download	3
Installation	3
Setup	3
Installing the ProvideX Plug-in for Eclipse	4
Software Updates	4
Configure ProvideX Plug-in	7
Workbench - ProvideX Executable	7
Documentation	8

©2010 - PVX Plus Technologies - Portions copyright 2009 Sage Software Canada Ltd. All rights reserved.

Eclipse is a trademark of Eclipse Foundation Inc. Java and all Java-based trademarks are trademarks or registered trademarks of Sun Microsystems. All other products referred to in this document are trademarks or registered trademarks of their respective trademark holders.

This document is an independent publication not affiliated with Eclipse Foundation Inc.

Reproduction in whole or in part without permission is strictly prohibited.

The capabilities, system requirements and/or compatibility with third-party products described herein are subject to change without notice.

Operating Systems

The ProvideX Plug-in for Eclipse is available for the following operating systems:

- MS-Windows
- Linux
- Apple OS X – 10.5.x

Pre-requisites

The ProvideX plug-in for Eclipse has a number of pre-requisites:

- A ProvideX Professional 7 activation
- A two user license (or a demo license on MS-Windows)
- Java SE 5 (1.5.x) run-time environment
- Eclipse version 3.2 or higher.

Note:

Do not continue unless *all* of these pre-requisites are satisfied. Installation instructions for Java and Eclipse components are provided in the sections that follow.

Java

Download

The Java™ runtime environment (JRE) can be acquired for free from the Sun web site as a separate download or as part of the Java software development kit (Java SDK).

The Java web site is always changing. Currently, the steps for downloading the Java JRE are as follows:

1. Go to the Java website at Sun (<http://java.sun.com>).
2. Navigate to the “Downloads” page.
3. Follow the instructions on the web page to download the current version of the Java Runtime Environment (JRE) or Java Software Development Kit (JDK).
4. Once the download has completed, install and configure the software on your system.

Eclipse

Download

The Eclipse software development kit (SDK) can be downloaded from the Eclipse web site (<http://www.eclipse.org/>). The SDK is distributed as a ZIP file for MS-Windows or a compressed TAR file for other operating systems. Please choose the appropriate file for your platform.

There are a number of websites that provide alternate methods for packaging, distribution and management of eclipse. Some of these are:

- Yoxos (<http://eclipsesource.com/en/yoxos> or <http://www.yoxos.com>)
“Eclipse Management for Professionals”.
- MyEclipse Enterprise Workbench (<http://www.myeclipseide.com/>)
“The most innovative approach to offering affordable tools for Java and J2EE developers”.

For more information on Eclipse, please visit the Eclipse web site and review the documentation and resources that are available there.

Installation

The distribution file must be unpacked into a directory on your PC. On a MS-Windows PC, this will normally be “C:\Program Files\”. The process for installing these files may vary depending on the download site that was used. The files that are downloaded from the Eclipse download site must be installed manually.

Setup

Once the installation has been completed, Eclipse must be configured to work in your environment. For more detailed information of the various features and setup steps, please visit the Eclipse web site and review:

- Documentation (<http://www.eclipse.org/documentation/>) and
- Tutorials (<https://eclipse-tutorial.dev.java.net/>).

Note:

All screen shots and information in this document is based on the current version of Eclipse (Galileo – July 2009).

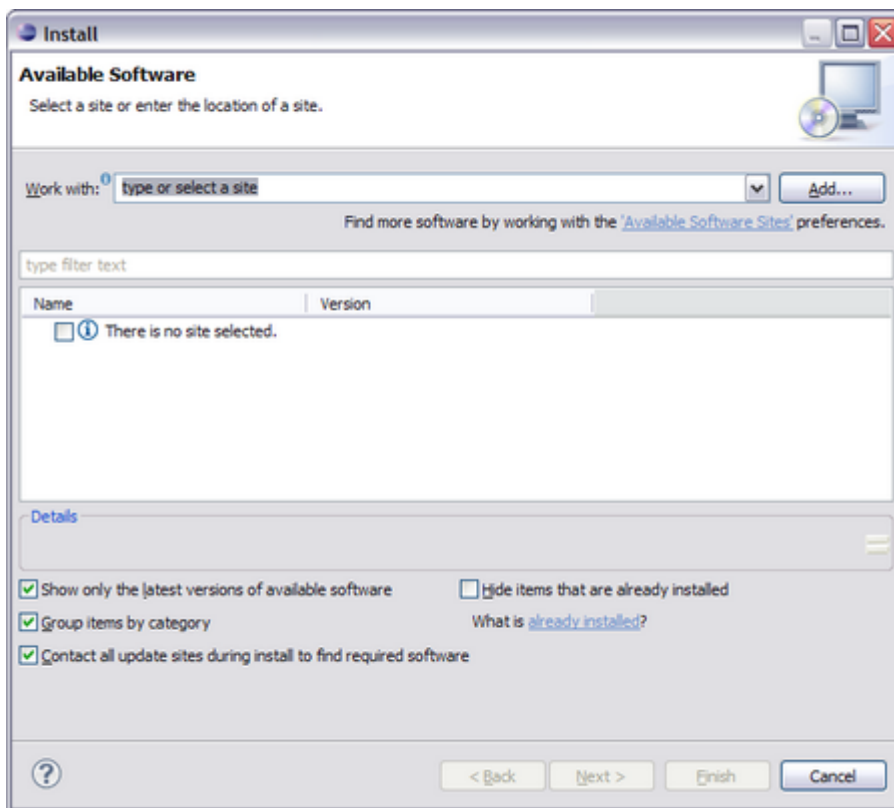
Installing the ProvideX Plug-in for Eclipse

Software Updates

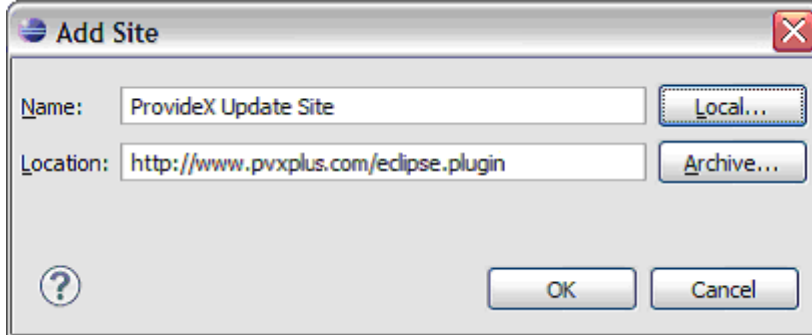
Once Eclipse has been installed and configured, the next step is to get the ProvideX plug-in installed within the Eclipse environment.

The easiest method for accomplishing this task is to use the “Software Update” capability within Eclipse.

1. Start Eclipse.
2. Choose “Help” from the menu toolbar.
3. Choose “Install New Software...”



4. Press the “Add” button to add a new update site; enter a name for the ProvideX Plug-in update site and the URL for the update site: (<http://www.pvxplus.com/eclipse.plugin>).

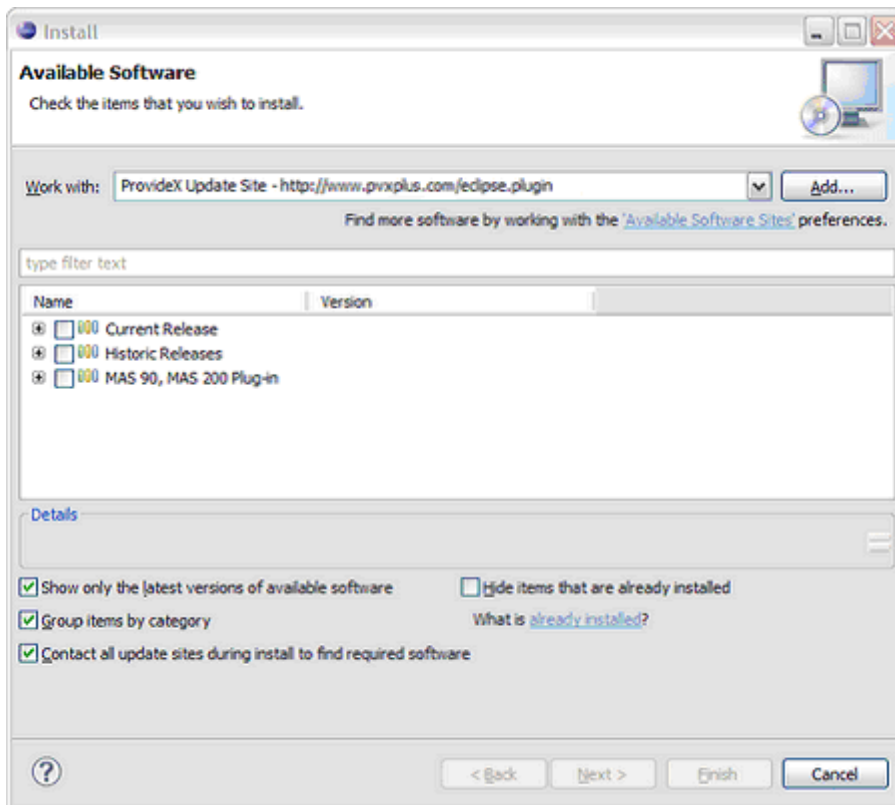


Note:

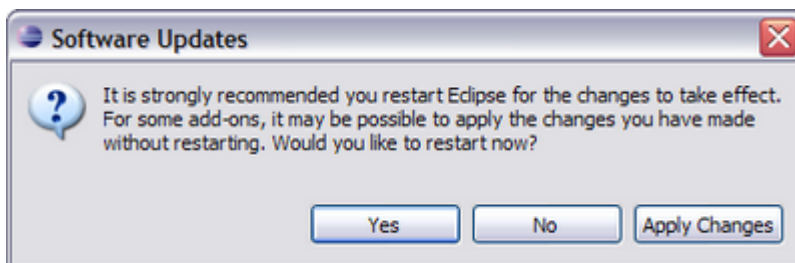
If a ZIP file of the ProvideX Plug-in was downloaded from the ProvideX web site, it can be used as the installation source by pressing the ‘Archive...’ button and selecting the ZIP file.

Press “OK” to complete the addition of this update site.

- The list of software that is available for this update site will be downloaded and displayed in the “Available Software” dialogue.



- Expand the “Current Release” category and select the “ProvideX Plug-in for Eclipse” to be installed. Press the “Next” button to continue the installation process.
- A new dialogue will display with a list of the items that were selected for installation. Press the “Finish” button to begin the next step of the install process.
- The files for each of the selected items will be downloaded and installed on your PC.
- Once the installation is completed, the software update process will ask to restart Eclipse for the modifications to take effect.



Press the “Yes” button to restart Eclipse.

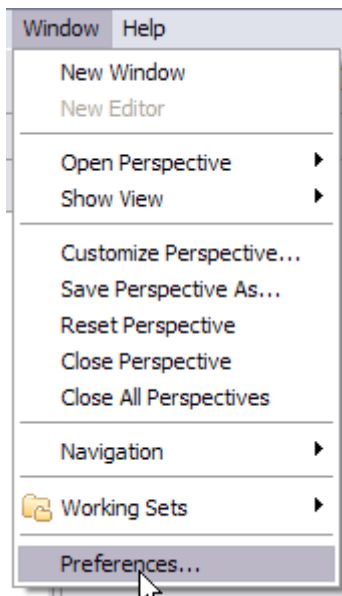
- The plug-in is now installed.

Configure ProvideX Plug-in

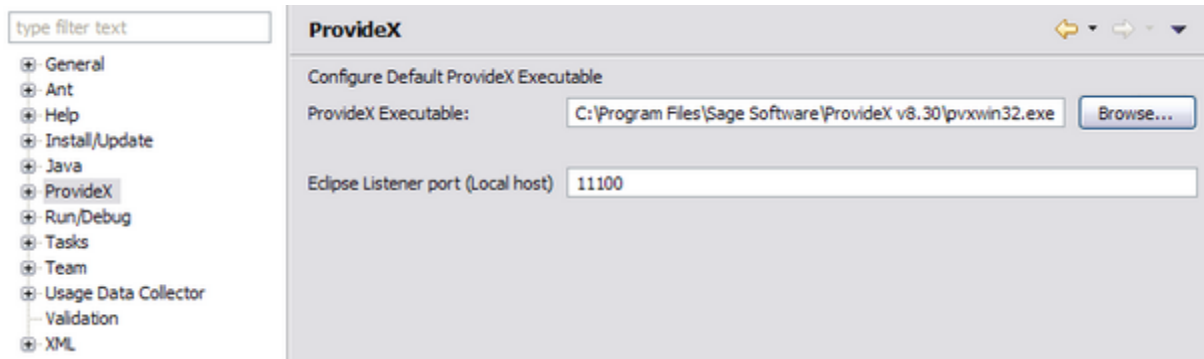
Workbench - ProvideX Executable

A ProvideX executable must be associated with the ProvideX plug-in before it can be used.

1. Select Window / Preferences from the main toolbar.



2. Select a ProvideX executable to be used; the license for the selected executable will be checked for compatibility with the ProvideX Plug-in.



3. Accept this executable to enable the remainder of the ProvideX plug-in preferences.

Documentation

A “*ProvideX Development User Guide*” is included in the Eclipse Help when the plug-in is installed. It can be accessed from the Help / Help Contents on the main toolbar.

This documentation includes information about additional configuration for the plug-in, creation of a sample project, and a short FAQ.